

WINTER SCHOOL 2023

11th JANUARY
(WED)



24th JANUARY
(TUE)

Theme

“Learning Osaka, the Mercantile Capital of Japan”.



KANSAI UNIVERSITY

Kansai University (KU), is one of the leading private universities in Japan. With a history of over 130 years, KU has 13 undergraduate faculties, 13 graduate schools, and 3 professional graduate schools. There are over 30,000 students enrolled at our university, and we have 4 campuses located in Osaka, the second largest city in Japan. Osaka is about half an hour train ride to the popular tourist destinations of Kyoto, Kobe and Nara.

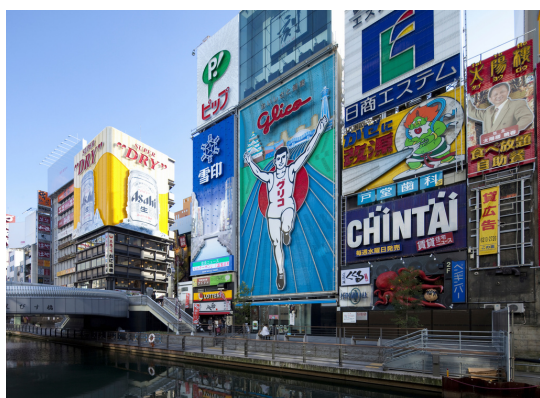


WINTER SCHOOL PROGRAM

The theme of this program is “Learning Osaka, the Mercantile Capital of Japan”.

While studying at Kansai University which is located in Osaka, first of all, participants will understand the history and culture of Osaka deeply, and discuss about the diversity of ideas and values as they compare with their home countries. In addition, after learning basic knowledge and information about Osaka through lectures, taking advantage of the characteristics of the mercantile city of Osaka, including observation of the history, actual situation and current situation of companies with roots in Osaka, lectures from business people, etc. They will be able to understand the “entrepreneurial spirit of the mercantile city of Osaka”

Furthermore, we emphasize this program as not only classroom lecture but also “seeing listening and experiencing”, includes content for visiting various historical and cultural facilities.



Course Descriptions

This program is consist of two weeks. Total classtime for mediated course is 45 hours, including time spent for assignment, tutoring and homework.The “Survival Japanese Language with Cultural Experience” course is optional.

Contents of English - mediated course

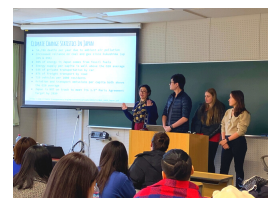
▶ Introduction to Osaka

In contrast to Tokyo, Mecca of Japan’s bureaucrats and politicians, Osaka has traditionally been a city of business, filled with an air of lively freedom, basically generated by its merchants and their bustling business-transactions. In this class, we will be looking at how Osaka’s suburban areas developed, with a focus on the World Exposition held in 1970, which spurred the change in the areas. Also the class deals briefly with people’s lives in Osaka, while referring mainly to its entertainment, which makes Osaka different from other major cities in Japan.

▶ Japanese Business Culture

This is a series of presentations designed to engage the participants in an examination, analysis, and discussion on various aspects of Japanese business culture including:

- Business Considerations in Japanese Culture
- Defining Business Culture
- The Imagery and Vocabulary of Japanese Business Culture
- The Structure of Japanese Business Culture
- Perceptions of Japanese Business Culture:Internal View
- Perceptions of Japanese Business Culture:External View
- Japanese Business Culture:Help or Hindrance?
- Summary and discussion



▶ Entrepreneurship

In this class, we will be looking at entrepreneurship in Osaka by offering examples of companies established by well-known entrepreneurs, who started or developed their businesses with their innovative ideas. The companies include Panasonic, Nisshin, Hankyu Railways, and Sharp (or Omron). Each involves unique ideas of its founder, offering us lots of clues to understanding corporate culture in Osaka or Japan.



● Excursion

There are some field trips (works) in connection with Mercantile Capital of Japan.
(Example: Expo'70 Commemorative Park, Cup Noodle Museum, The Osaka Museum of Housing and Living)

Optional Course

▶ Survival Japanese Language with Cultural Experience

The applicants must choose and indicate us in the application form. This course can be taken with additional fee (JPY 10,000)

Survival Japanese Language with Cultural Experience course targets beginner students (less than 300 hours of study). Restrictions may apply to intermediate level students or above due to class size limitations (priority will be given to beginners).

This course is an introductory Japanese language course for students who have never learned Japanese before, or have a very basic knowledge of Japanese greetings, such as hiragana and katakana. Students are taught fundamental expressions and phrases necessary to “survive” during a short stay in Japan. Students will also learn Japanese culture through a variety of activities including Japanese cultural studies (e.g.SADO”Japanese Tea Ceremony”and KYUDO”Japanese archery”,the contents are subject to change). By the end of the course, students will be able to use basic Japanese conversational expressions and phrases in daily life and understand a part of Japanese traditional culture.

Program Overview

Eligible Applicants

The applicant must be an undergraduate or graduate student currently enrolled at an accredited college/university/research institution outside Japan. All lectures (except “Survival Japanese Language with Cultural Experience”) are taught in English. A certain degree of English proficiency is required to understand the lectures and engage in the various activities. B2 level or higher English proficiency in CEFR (IELTS 5.5 and TOEFL [iBT] 72) or equivalent level is recommended for non-native English speakers).

Program Summary

Program Period		Wednesday 11 January ~	Tuesday 24 January
Course		Main Course “Introduction to Osaka” “Japanese Business Culture” “Entrepreneurship”	Optional Course “Survival Japanese Language with Cultural Experience”
	Fee	JPY 180,000	JPY 10,000
Minimum Number of Participants		10 students	4 students
Accommodation	Style	Student Apartment	Homestay <i>*Additional fee(JPY 1,000) is required.</i>
	Meals	Exclusive	Includes Breakfast and Dinner
	Check-in / out	Check-in Wednesday 11 January (Afternoon) <i>*Schedule for check-in/ out is unchangeable.</i>	Check-out Tuesday 24 January (Morning)
Overseas Travel Accident Insurance		Required	

▶ Overseas Travel Accident Insurance

All participants are required purchasing the overseas travel accident insurance specified by Kansai University. The insurance premium is JPY 6,000 for 14 days. This insurance premium is not included in the program fee, but participants are obliged to purchase it along with the program fee. The insurance coverage is as follows:

Coverage	Insured Amount
Accidental Death	JPY 10,000,000
Accidental Disability	JPY 10,000,000
Accidental Medical Expenses	JPY 30,000,000
Sickness Medical Expenses	JPY 30,000,000
Rescuer's Expenses	JPY 10,000,000
Personal Liability	JPY 100,000,000

- This insurance does NOT cover pre-existing conditions (including allergies) or damage to baggage.
- The insurance can cover you only for a certain period of time(starting from check-in day to check-out day.) Earlier or later than the program schedule is exclusive.
- Should you require additional coverage to the above, you need to purchase another one out of your pocket.

Program Overview

Accommodation

■ Student apartment

No additional fee is required (apartment utilities such as water, electricity and Wi-Fi are included. Meals are exclusive). Each room in student apartment will be equipped with a bathroom, a bed and bedding, TV, a refrigerator, and daily commodities (As for washing machine(s), it is attached in a room or equipped in the premise).

Most of them are located within walking distance but the exception would happen depending on the number of applicants.

■ Homestay

Additional fee (JPY 1,000) is required.

Houses of host families are located within an hour commute by public transportation to Senriyama Campus.

The host family will pick you up at Senriyama campus on the day of check-in.

Course Schedule <January 11th ~ January 24th, 2023>

Main courses

Optional courses

	1/11(WED)	1/12(THU)	1/13(FRI)	1/14(SAT)	1/15(SUN)	1/16(MON)	1/17(TUE)
1st 9:00-10:30		Orientation		Survival Japanese Language with Cultural Experience		Japanese Business Culture1	Survival Japanese Language with Cultural Experience
2nd 10:40-12:10		Campus Tour Welcome Party	Introduction to Osaka1	Student Session		Japanese Business Culture2	Business Talk
3rd 13:00-14:30	Check-in (Afternoon)	Survival Japanese Language with Cultural Experience	Introduction to Osaka2			Japanese Business Culture3	Excursion
4th 14:40-16:20		Survival Japanese Language with Cultural Experience	Excursion			Japanese Business Culture4	Excursion
5th 16:20-17:50			Excursion				
	1/18(WED)	1/19(THU)	1/20(FRI)	1/21(SAT)	1/22(SUN)	1/23(MON)	1/24(TUE)
1st 9:00-10:30	Entrepreneurship1	Entrepreneurship3	Survival Japanese Language with Cultural Experience			Preparation for presentation	Check-out (Morning)
2nd 10:40-12:10	Entrepreneurship2	Entrepreneurship4	Survival Japanese Language with Cultural Experience			Presentation	
3rd 13:00-14:30	Excursion	Excursion	Survival Japanese Language with Cultural Experience			Presentation	
4th 14:40-16:20	Excursion	Excursion				Closing Ceremony Farewell Party	
5th 16:20-17:50							

Evaluation

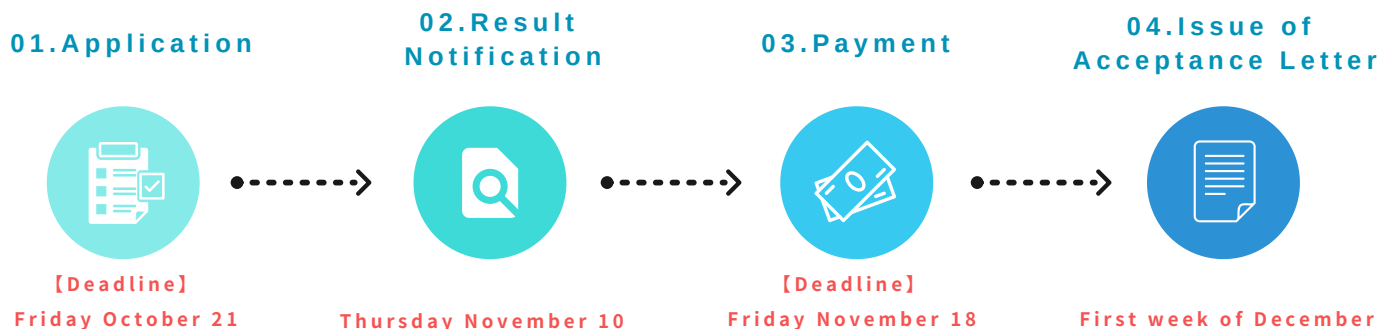
The instructor(s) for each course will evaluate students based on the criteria stipulated below. Letter grades (S~F) based on Kansai University rating criteria will be used to indicate the final evaluation.

Score	Grade
100~90	S Superior
89~80	A Excellent
79~70	B Good
69~60	C Passable
Below 59	F Fall

■ Certificates of completion will be presented in a part of closing ceremony.

■ Academic transcripts will be sent by post within two weeks after the program.

Application procedure



This program could be cancelled given the Novel Coronavirus and so forth.

01.Application

[Deadline]
Friday October 21,2022

▶ Apply from here

https://jmrs.kyomu.kansai-u.ac.jp/wsin/!SIPLS0110?KHN_KEY=20220629145612001

▶ Documents to be uploaded

- ① Official certificate of enrollment issued by your home institution. (written in English)
- ② Passport photo page
- ③ Pledge
- ④ Note of health condition

*The details are informed after being received the application from you.

02.Result Notification

Application documents will be screened and then applicants will be notified of the result via e-mail by Thursday November 10, 2022 accordingly. The guidelines for the program fee payment and other instructions will be sent to the successful applicants as well. If you do not receive any notification message by Friday November 11, 2022, please contact us immediately.

03.Payment

[Deadline]
Friday November 18,2022

The below is what you expect to be charged.

- Basic program fee per person:JPY 180,000
- Overseas Travel Accident Insurance:JPY 6,000

Basic program fee includes:

- Tuition fee
- Course materials
- Accommodation (daily commodities and utilities included)
- Facility usage fee
- Administration fee

Basic program fee DOES NOT includes:

- Overseas travel accident insurance (please refer to page 3)
- Transportation fees in Japan
- Fee(JPY10,000) for optional course; “Survival Japanese Language with Cultural Experience”
- Meals (except for welcome and farewell parties)
- Additional homestay fee (please refer to page 4)
- Airfare ticket

- Follow the instruction and transfer the required fee in one transaction to the designated bank account by the deadline.
- Remittance must be made in Japanese yen.
- Money transfer from outside of Japan may take some time to be completed. Be sure to transfer as early as possible so that the payment will be completed by the deadline.
- Applicants are responsible for the remittance fee.
- Please kindly note that we will not refund tuition and other fees once payment is completed.

04. Issue of Acceptance Letter

The acceptance letter is sent to you via e-mail after being made sure completion of payment. If you do not receive it until Friday, December 2nd, 2022 in spite of completion of your payment, please contact us immediately.

VISA

Participants are responsible for obtaining the appropriate visa. Please refer to the Ministry of Foreign Affairs website or consult the nearest Embassy or the Consulate General of Japan in your area for more information and advices before applying for this program.

www.mofa.go.jp/j_info/visit/visa/index.html

Personal Information

Kansai University Winter School follows Japanese laws, guidelines, and other norms concerning the use of personal information (address, name, telephone number or personally identifiable information) provided by the applicant. When you apply for this program, be sure to refer to the following website for details regarding the use of personal information:

Japanese only: www.kansai-u.ac.jp/global/footer/privacy.html

Inquiries



KANSAI UNIVERSITY

International Education Group, Division of International Affairs
3-3-35 Yamate-cho, Suita-shi, Osaka 564-8680 JAPAN



+81-6-6368-0178



short_term@ml.kandai.jp

Official Website

KANSAI UNIVERSITY

<http://www.kansai-u.ac.jp/English/>

WINTER SCHOOL

https://www.kansai-u.ac.jp/Kokusai/short_term/

CAMPUS MAP

<https://www.kansai-u.ac.jp/English/about/campus/#senriyama>

